

This Improvement has been declared a LIMITED ACCESS HIGHWAY From station 1025+00 to station 1174+00 by action of the DIRECTOR of HIGHWAYS and Recorded in Volume 46, Page 1165 of the DIRECTORS JOURNAL PURSUANT TO LAW.

CENTER LINE SURVEY PLAT

87

FED. RD.	STATE	PROJECT
2	OHIO	I-77-2(4)54

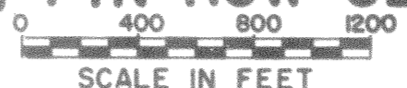
153
170

GUE-77-19.77
LIMITED ACCESS

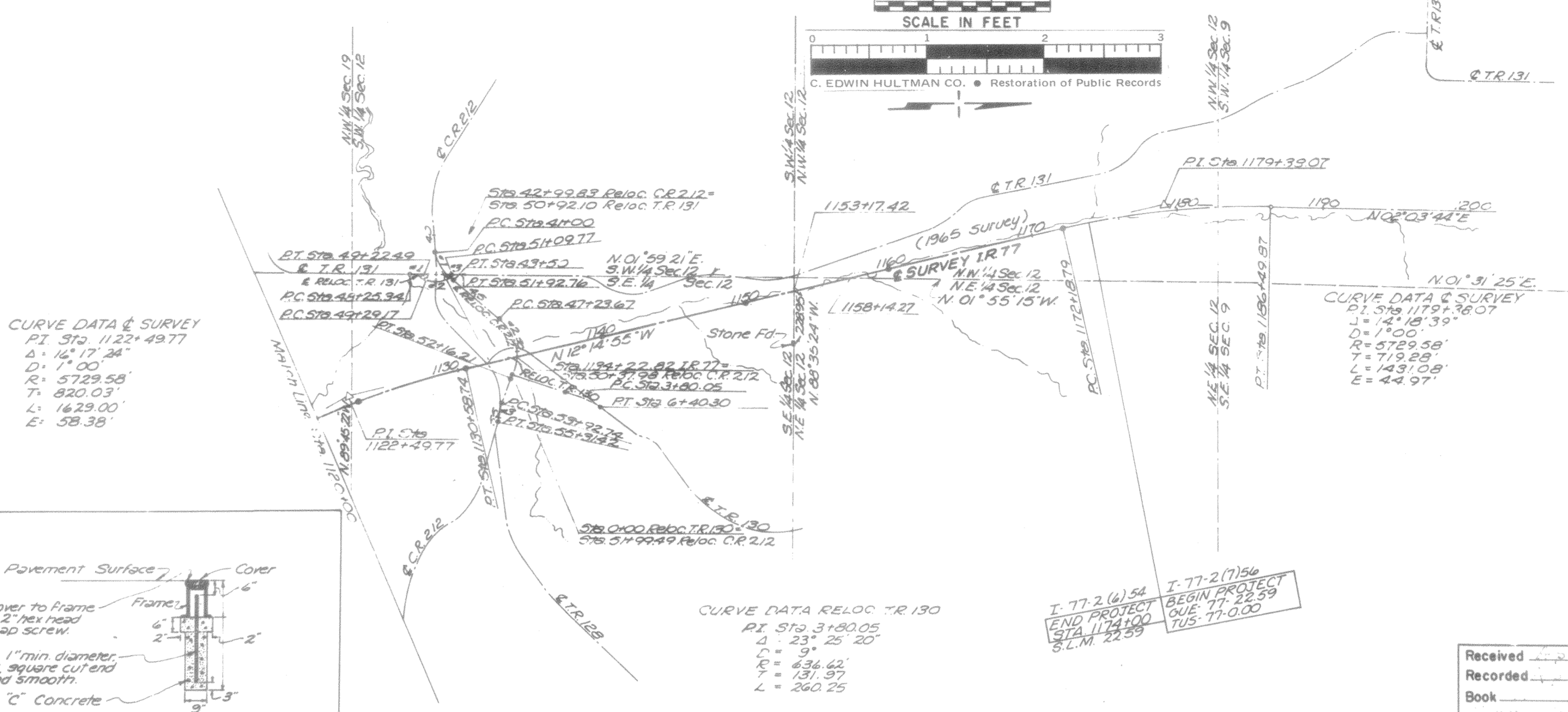
2
19

GUE-77-19.77
GUERNSEY COUNTY, OHIO

WHEELING TWP, T4N-R3W-SECTIONS 9, 12 & 19 (U.S.M.L.)



C. EDWIN HULTMAN CO. • Restoration of Public Records



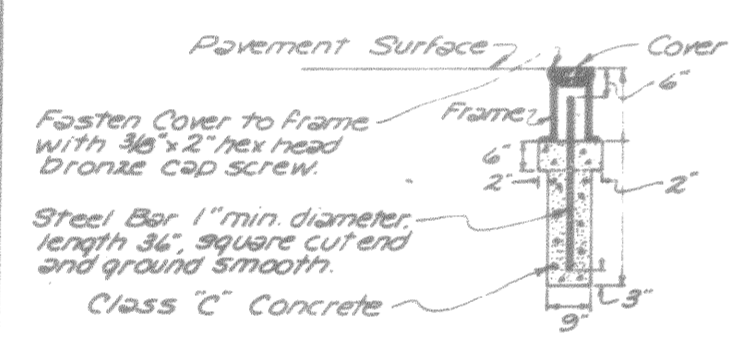
CURVE DATA & SURVEY
 P.I. Sta. 1122+49.77
 $\Delta = 16^{\circ}17'24''$
 $D = 1^{\circ}00'$
 $R = 5729.58'$
 $T = 820.03'$
 $L = 1629.00'$
 $E = 58.38'$

CURVE DATA & SURVEY
 P.I. Sta. 1179+36.07
 $\Delta = 14^{\circ}18'39''$
 $D = 1^{\circ}00'$
 $R = 5729.58'$
 $T = 719.28'$
 $L = 1431.08'$
 $E = 44.97'$

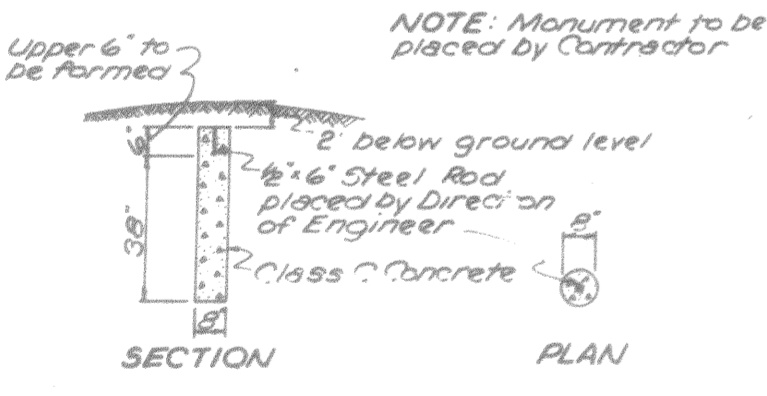
CURVE DATA RELOC. T.R. 130
 P.I. Sta. 31+80.05
 $\Delta = 23^{\circ}25'20''$
 $D = 9^{\circ}$
 $R = 636.62'$
 $T = 131.97'$
 $L = 260.25'$

I-77-2(4)54
 END PROJECT
 STA 1174+00
 S.L.M. 22.59

I-77-2(7)56
 BEGIN PROJECT
 GUE-77-22.59
 TUS-77-0.00



I-B MONUMENT ASSEMBLY



DETAIL OF CENTERLINE REFERENCE MONUMENT

CURVE DATA RELOC. T.R. 131

#1	#2	#3
P.I. Sta. 48+74.79	P.I. Sta. 50+01.60	P.I. Sta. 51+51.87
$\Delta = 27^{\circ}46'28''$	$\Delta = 51^{\circ}32'53''$	$\Delta = 23^{\circ}46'25''$
$D = 28^{\circ}38'52''$	$D = 38^{\circ}11'50''$	$D = 28^{\circ}38'52''$
$R = 200.00'$	$R = 150.00'$	$R = 200.00'$
$T = 49.45'$	$T = 72.49'$	$T = 42.10'$
$L = 96.95'$	$L = 135.13'$	$L = 82.99'$

CURVE DATA RELOC. C.R. 212

#1	#2	#3
P.I. Sta. 42+32.77	P.I. Sta. 50+17.23	P.I. Sta. 54+62.42
$\Delta = 47^{\circ}44'48''$	$\Delta = 78^{\circ}23'27''$	$\Delta = 13^{\circ}52'06''$
$D = 19^{\circ}05'55''$	$D = 15^{\circ}54'55''$	$D = 10^{\circ}$
$R = 300.00'$	$R = 360.00'$	$R = 572.96'$
$T = 132.77'$	$T = 293.56'$	$T = 69.68'$
$L = 250.00'$	$L = 492.54'$	$L = 138.68'$

TYPICAL	I. REF. MON. STA.
	R.O.C. 1123+00
	P.T. 1130+58.74
Survey	P.O.T. 1140+00
	P.O.T. 1150+00
Monument	P.O.T. 1160+00
	P.C. 1172+18.79
	TOTAL 6 Each

I-B MONUMENT ASSEMBLIES STATIONING SCHEDULE			
LOCATION	Quant	Unit	LOCATION
P.C. 41+00 & Reloc. C.R. 212	1	Each	R.C. 31+80.05 & Reloc. T.R. 130
P.O.C. 42+99.83 & Reloc. C.R. 212	1	Each	P.T. 6+40.30 & Reloc. T.R. 130
P.O.T. 50+92.10 & Reloc. T.R. 131	1	Each	
P.T. 43+50 & Reloc. C.R. 212	1	Each	
P.C. 47+23.67 & Reloc. C.R. 212	1	Each	
P.O.C. 51+99.49 & Reloc. C.R. 212	1	Each	
P.O.T. 0+00 & Reloc. T.R. 130	1	Each	
P.T. 52+16.21 & Reloc. C.R. 212	1	Each	
P.C. 53+92.74 & Reloc. C.R. 212	1	Each	
P.T. 55+31.42 & Reloc. C.R. 212	1	Each	
	TOTAL	10	Each

Received _____ 1965
 Recorded _____ 1965
 Book _____ Page 87

 County Recorder

Signed _____
 JAMES T. HOLDEN
 Date 4-22-65 Division Deputy Director

I hereby certify that this plat is a true delineation of a survey made for the OHIO DEPARTMENT OF HIGHWAYS by BEISWENGER, HOCH, & ARNOLD
 Bryan E. McCoy Date 4-2-65
 BRYAN E. McCOY
 Reg. Surveyor No. 4936